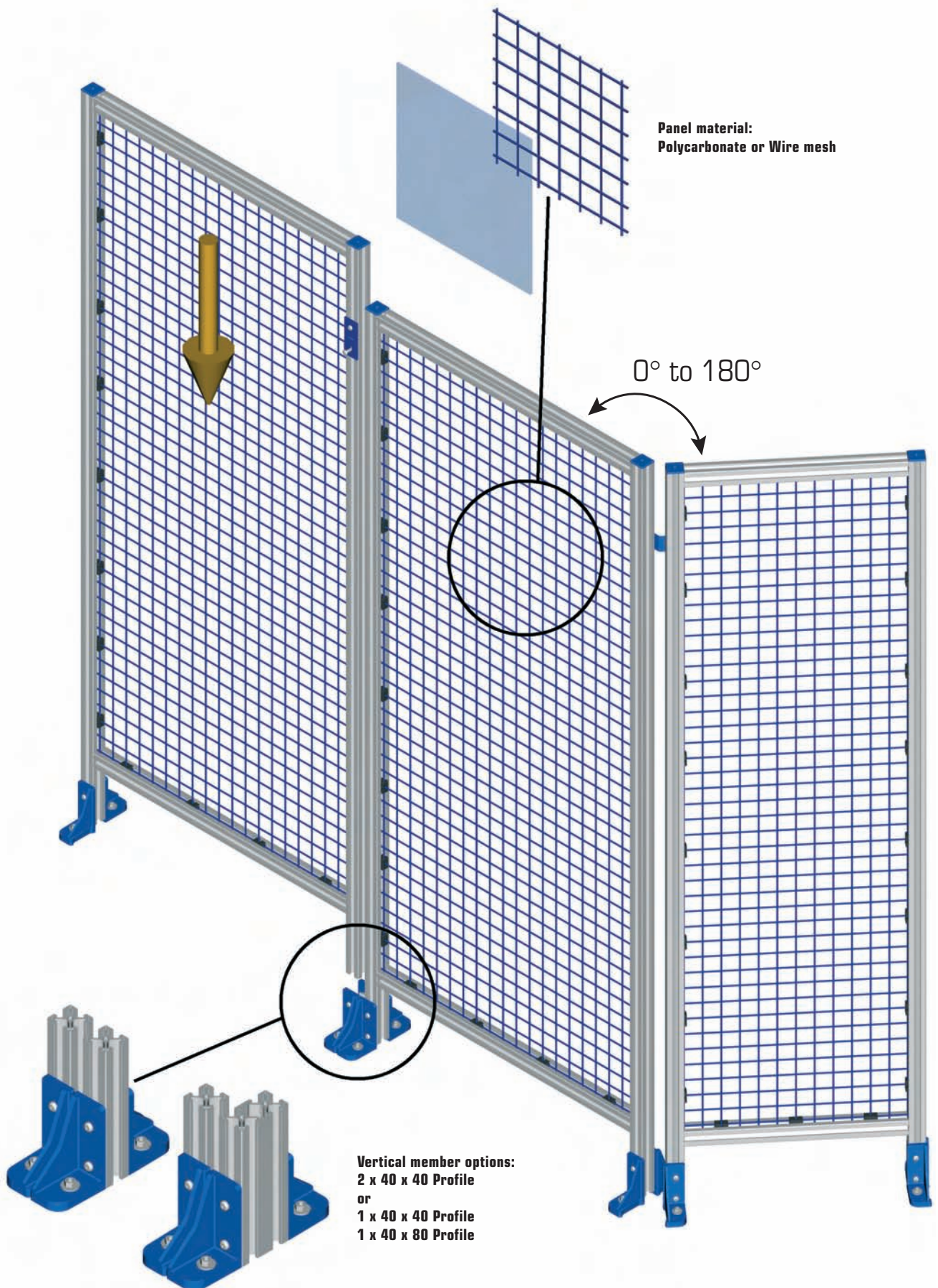




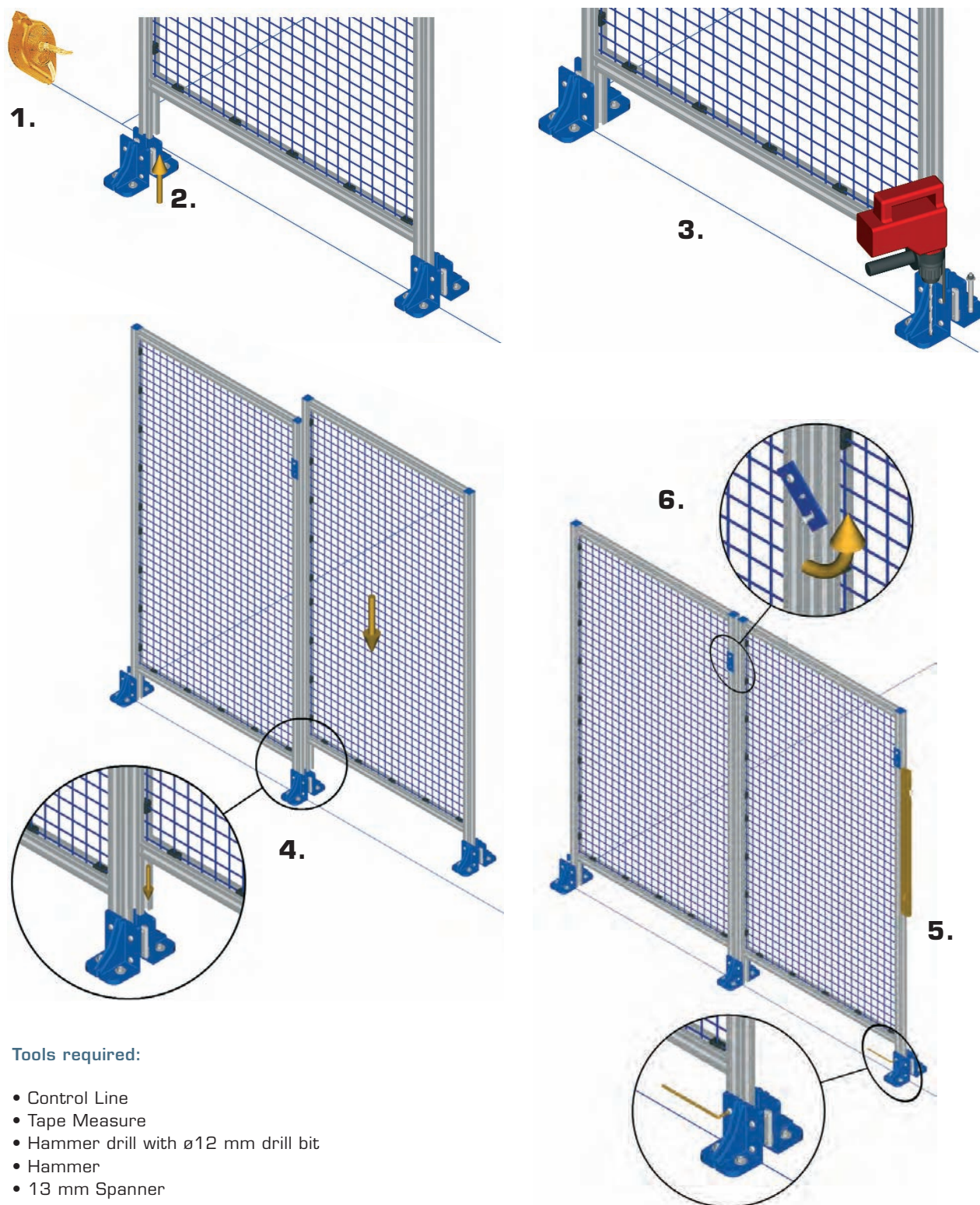
Overview





Assembly tips

1. Mark out the course of the safety fence installation with a control line.
2. Assemble the safety fence Double foot on both sides of the first element only (feet are pre-assembled on one side).
3. Line up the first element with the mark made in step one, drill and bolt to the floor.
4. Slide all subsequent elements into the foot of the previous element, drill and bolt to the floor.
5. Use a spirit level to align the elements and then tighten the double foot fixing screws.
6. Connect elements at the top with the supplied safety fence connector.



Tools required:

- Control Line
- Tape Measure
- Hammer drill with $\varnothing 12$ mm drill bit
- Hammer
- 13 mm Spanner
- Hexagon socket wrench $\varnothing 5$ mm
- Spirit level