

ML-808GX

NEW

Debut!

Flexibly usable for all kinds of
dispensing scenes
Intelligent Dispenser



Dispensing conditions
edit software
MuCOM[®]808's
functions also
remarkably enhanced!



PAT.

Controller's performance enhanced

◆ Upgraded to Quadruple Accuracy of Response Time to Dispensing Signal

◆ I/O control **additional function**

Controllable from **PLC** at will,
RS-232C communication also available

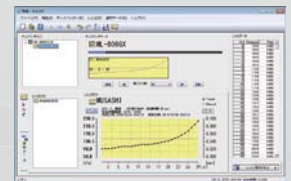
New Functions of software

◆ Conditioning mode for 2-part Adhesive **newly developed**

Automatically setup dispensing condition on the basis of test conditions

◆ Recipe management of dispensing conditions **new idea**

Dispensing conditions changing in accordance with time passage stored on an item by item basis



Applications



Sealant dispensing of PUR for smartphone's cover



Dispensing of 2-part epoxy adhesive to motors

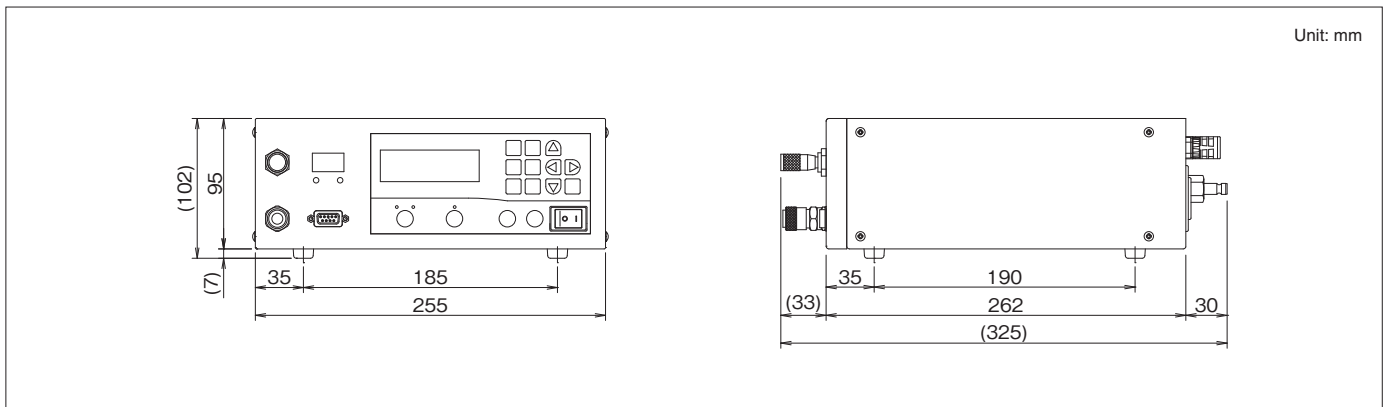


Line width variable in an instant

Specifications

Item name	High precision dispenser flexible with viscosity change
Model	ML-808GX
Control system	Micro-computer controlled electro-pneumatic system
Pneumatic control circuit	Air pulse stable circuit (PAT.)
Pressure setting range	20 to 800kPa (in steps of 0.1kPa)
Dispensing duration range	0.01 to 999.9sec. (in steps of 0.001sec.)
Dispensing mode	Timed mode/manual mode
Vacuum pressure range	0 to -20kPa
Vacuum time range	0.001 to 4.000sec. (in steps of 0.001sec.)
Number of memory	400 channels
Main functions	Auto increment function Auto slope function Express shot function RS-232C communication function I/O communication function
Input/output signal	Input: Contact input or open collector input Output: Open collector output
Dispensing conditions edit software	MuCOM for ML-808GX (option)
Supply air pressure	Dispensing pressure + 100kPa or more, and max. 900kPa
Rated power source and frequency	100 to 240V AC, 50/60Hz
Input voltage and frequency /over-voltage category	90 to 264V AC, 47 to 63Hz Category II
Power consumption	40W
Applicable fuse	250V T2.0A (time-lag fuse ø5 type)
Operating environment	Temperature range: 15 to 35°C Humidity range: 25 to 75%, non-condensing Elevation: below 2000m
Dimensions	W255xD325xH102mm
Weight	5kg
Safety standard	Compliant with EU RoHS Compliant with CE mark (EMC LCD)

Dimensions



Safety precaution
Make sure to read the instruction manual before you use the unit, for your safety.

* We reserve the right to change the specifications without notice.
* All copyrights are retained by MUSASHI ENGINEERING. Reprinting, reproducing, and/or transmitting as electronic data in whole or in part these material without prior written permission is strictly prohibited.

MUSASHI ENGINEERING, INC. is certified and registered according to ISO14001 ENVIRONMENTAL MANAGEMENT.



IZUMI INTERNATIONAL, INC.

IZUMI INTERNATIONAL, INC.
1 Pelham Davis Circle, Greenville, SC 29615 USA
Tel: 864-288-8001 Fax: 864-288-7272
E-mail: us-sales@izumiinternational.com
Web: www.izumiinternational.com

IZUMI INTERNATIONAL CO., LTD.
3-20-10 Toyosaki, Kita-ku, Osaka, Japan
Tel: 06-6375-4116 Fax: 06-6375-4117
E-mail: jp-sales@izumiinternational.com
Web: www.izumiinternational.com