

EKTW-CAX-1COP/2COP Auto-doff Take Up Winder with Electronic Control

Features

- Programmable version of the EKTW-CA auto-doff enabled turret winder.
- Electronic control system enables quick change of winding parameters such as wind ratio, winding tension, and wind pressure.
- Ideal for multi-purpose production lines where fiber type or filament count is changed frequently.
- Specifically designed for winding carbon fiber, and can be used for winding other high performance fibers.



Standard Specifications

Specification	1 COP		2 COP	
	EKTW-CAX	EKTW-CALX	EKTW-CAX	EKTW-CALX
Layout	4 rows x 3 high, 12 spindles / frame			
Type of fiber	Carbon Fibers :3K – 50K, and other Hi-performance fibers			
Package shape	5 rows x 4 positions high, 20 spindles per frame			
Winding speed	1 – 40 m/min, for other ranges please contact			
Paper core size and length	ID 51mm / ID: 76 – 77 mm L = 10" (254mm)			
Max package diameter	250mm	330mm	250mm	330mm
Winding tension	100—3000 cN (air cylinder) / 150—2800 cN (spring)			
Tension control	Dancer tension control			
Traverse system	Scroll cam traverse system with programmable wind ratio			
Control system	Tension and speed control by dancer system			
Power requirement	200V, 50/60 Hz 3phase or 400V, 50/60 Hz 3 phase			
Compressed air	0.5 MPa			

Please contact Izumi International, Inc. for special requirements

Features



Turret system for automatic bobbin changeover once winding length is reached.

Package pressure device is controlled by air cylinder. Setting is adjustable on main HMI.



Fiber winding tension is controlled by air cylinder.

Setting is adjustable on main HMI.

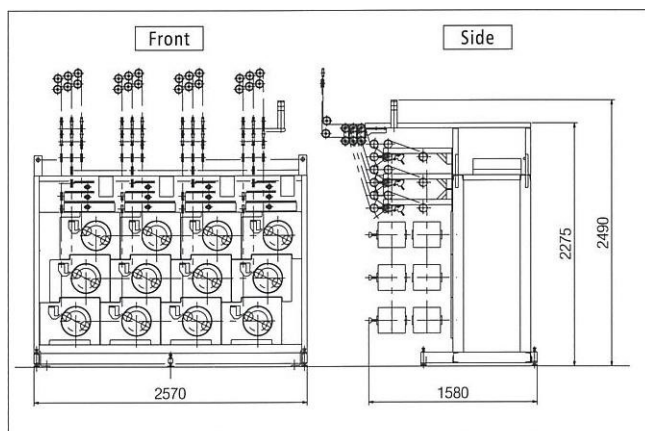
Tension gradually decreases as the package builds for good package construction.

LENGTH						0.47
WINDER 1 SPL 0 M 0 M 0 M	WINDER 5 SPL 0 M 0 M 0 M	WINDER 9 SPL 0 M 0 M 0 M	WINDER 13 SPL 0 M 0 M 0 M	WINDER 17 SPL 0 M 0 M 0 M	WINDER 21 SPL 0 M 0 M 0 M	MENU
WINDER 2 SPL 0 M 0 M 0 M	WINDER 6 SPL 0 M 0 M 0 M	WINDER 10 SPL 0 M 0 M 0 M	WINDER 14 SPL 0 M 0 M 0 M	WINDER 18 SPL 0 M 0 M 0 M	WINDER 22 SPL 0 M 0 M 0 M	SETUP
WINDER 3 SPL 0 M 0 M 0 M	WINDER 7 SPL 0 M 0 M 0 M	WINDER 11 SPL 0 M 0 M 0 M	WINDER 15 SPL 0 M 0 M 0 M	WINDER 19 SPL 0 M 0 M 0 M	WINDER 23 SPL 0 M 0 M 0 M	STATUS
WINDER 4 SPL 0 M 0 M 0 M	WINDER 8 SPL 0 M 0 M 0 M	WINDER 12 SPL 0 M 0 M 0 M	WINDER 16 SPL 0 M 0 M 0 M	WINDER 20 SPL 0 M 0 M 0 M	WINDER 24 SPL 0 M 0 M 0 M	MASTER LENGTH RESET
						LAST LENGTH
						SETUP WINDERS

Central HMI for parameters below:

- * Winding speed
- * Winding ratio
- * Winding tension
- * Package pressure
- * Doff length

Standard Layout



Standard layout dimensions for a 12 position winder frame.

Shows layout for EKTW-CAX-2 COP version.