

## EMFT-BT

## Bobbin Traverse Winder for Flat Materials

### Features

- For tow-preg, tapes, flat yarns, slit film materials, slit prepreg.
- Bobbin traverse system decreases risk of damaging, bending, or twisting the tape during winding.
- All positions have a common traverse mechanism to enable cost effective solution for take up winding of flat materials.
- Traverse stroke is adjustable.



### Standard Specifications

|                               |   |
|-------------------------------|---|
| Type of Material              | Tapes with width between 5mm to 30mm.   |
| Number of Positions per Frame | 4 rows x 3 positions high, 12 spindles per frame  |
| Winding Speed                 | Max 200 m/min (at OD 6" tube), for other ranges please contact  |
| Winding Pitch                 | 0.1mm—39.9mm  |
| Tension Control               | By dancer roller control  |
| Winding Tension               | 10gram—50 gram  |
| Traverse Length               | 20mm—250mm  |
| Tube size                     | ID 1" tube to ID 6" tube, paper tube or plastic tube  |
| Max Package Diameter          | 350mm   |
| Traverse System               | Simultaneous bobbin traverse  |
| Driving System                | Individual drive on each spindle  |
| Power Requirement             | 3 Phase, AC208 – 220V, 50/60Hz  |
| Control System                | Tension and speed control by dancer roller system.<br>Main HMI is used to control traverse length, winding pitch, and winding positions.<br>Option for rotation direction switching (clockwise/counterclockwise). |

Please contact Izumi International, Inc. for special requirements

## Features



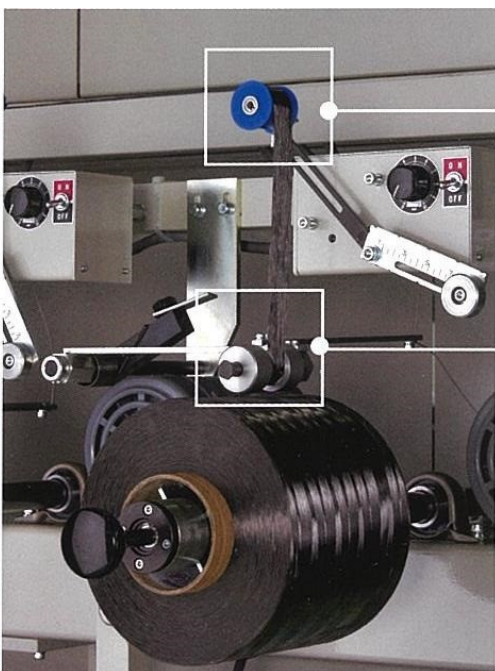
Front-end



Back-end

The EMFT winder keeps the tape path straight by means of bobbin traverse to reduce damage to the tape and avoid twisting or turning. It is specifically designed to wind flat tape materials.

The traverse stroke is adjustable.



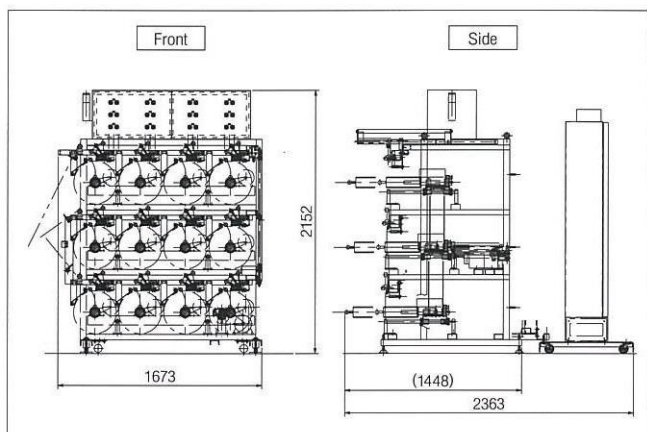
### Dancer roller

EMFT utilizes a dancer roller tension control system which provides constant winding tension.

### Contactless tape laying roller

The sensor controlled contactless laying roller maintains a specific distance from the package surface to ensure proper winding.

## Standard Layout



Standard layout dimensions for a 12 position winder frame.