

*For low viscosity materials such as  
instantaneous adhesive agent*

*Optimum for high-precision dispensing in small amount*



## Simple tube setting

- High precision dispensing without troublesome adjustment, easily feasible by anybody.

## Elimination of liquid drip

- Liquid drip eliminated and bubble generation reduced even for low-viscosity liquid materials.

## Simple Maintenance

- Only tube for liquid-exposed section.



Simple and secure tube placement achieved

- Long life of liquid material feeding tube thanks to our original tube installation mechanism.
- "Digital Timer" allowing for dispensing time setting with simple operation equipped.
- A dispensing pen with a remote switch for manual work (option) is available.

## SPECIFICATIONS

Item name	Rotary-type tubing dispenser
Model	MT-410
Dispensing method	Rotary tubing system
Dispensing mode	Timed mode/manual mode
Dispensing time setting range	0.01 to 99.99s
Range of rotational speed setting	0 to 120rpm
Input signal	External dispensing signal
Output signal	Dispensing completion signal
Rated power supply and frequency	AC 100 to 240 V, 50/60 Hz
Power consumption	25 W
Compatible standards	CE-marking (EMC and low voltage directives), EU RoHS
External dimensions	W188×D208×H75mm (projection portion excluded)
Weight	3.0kg

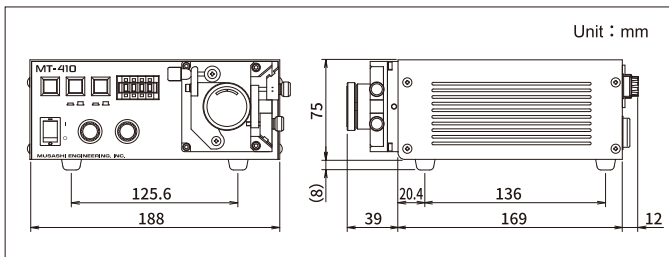
## APPLICABLE DISPENSING MATERIALS

Anaerobic low viscosity materials (such as instantaneous adhesive & UV hard-type adhesive) low viscosity epoxy resin, silicone oil, etc.

## APPLICATIONS

Adhesion, potting, coating, dot dispensing, line dispensing, injection, filling, etc.

## EXTERNAL DIMENSION DRAWINGS



## Dispensing pen for tubing dispenser



Item name	Model	Code length
Dispensing pen [LS-NH3 type16 4pin]	LS-NH3-1604P	1m

## LIST OF PTFE TUBES

A wide range of tubes is available to meet your liquid viscosity and dispensing volume needs.

Use our black PTFE tube if you will be dispensing UV cured material.

PTFE tubes for tubing dispenser			
Model name	Tube outside diameter (φ)	Tube inside diameter (φ)	Tube length
TT-32	0.75	0.25	10m
TT-30	0.76	0.30	10m
TT-28	0.84	0.38	10m
TT-26	0.92	0.46	10m
TT-24	1.06	0.56	10m
TT-22	1.18	0.68	10m
TT-21	1.31	0.81	10m
TT-20	1.46	0.86	10m
TT-19	1.56	0.96	10m
TT-18	1.67	1.07	10m
TT-17	1.79	1.19	10m
TT-16	1.95	1.35	10m
TT-15	2.10	1.50	10m
TT-14	2.28	1.68	10m
TT-13	2.53	1.93	10m
TT-12	2.76	2.16	10m
TT-11	3.01	2.41	10m
TT-10	3.29	2.69	10m

Black PTFE tubes for tubing dispenser (for UV curing materials)			
Model name	Tube outside diameter (φ)	Tube inside diameter (φ)	Tube length
TT-30B	0.76	0.30	10m
TT-28B	0.84	0.38	10m
TT-26B	0.92	0.46	10m
TT-24B	1.06	0.56	10m
TT-22B	1.18	0.68	10m
TT-21B	1.31	0.81	10m
TT-20B	1.46	0.86	10m
TT-19B	1.56	0.96	10m
TT-18B	1.67	1.07	10m
TT-17B	1.79	1.19	10m
TT-16B	1.95	1.35	10m
TT-15B	2.10	1.50	10m
TT-13B	2.53	1.93	10m
TT-12B	2.76	2.16	10m
TT-11B	3.01	2.41	10m
TT-10B	3.29	2.69	10m



### Safety precaution

Make sure to read the instruction manual before you use the unit, for your safety.

\* We reserve the right to change the specifications without notice.  
\* All copyrights are retained by MUSASHI ENGINEERING. Reprinting, reproducing, and/or transmitting as electronic data in whole or in part these material without prior written permission is strictly prohibited.

MUSASHI ENGINEERING, INC. is certified and registered according to ISO14001 ENVIRONMENTAL MANAGEMENT.



<http://www.musashi-engineering.co.jp/english/>

**World Leading Dispenser**  
**MUSASHI ENGINEERING, INC.**

### HEAD OFFICE

8-7-4, Shimorenjaku, Mitaka, Tokyo, 181-0013, Japan TEL : (81)422-76-7111 / FAX : (81)422-76-7122

### BRANCH

TOKYO, OSAKA, NAGOYA, SENDAI, FUKUOKA, SAITAMA, NAGANO, EAST-KANTO, AKITA, KANAZAWA

<b>SINGAPORE</b>	114 Lavender Street, #08-88/89 CT Hub 2, Singapore 338729 TEL : (65)6258-2422 / FAX : (65)6258-4844
<b>THAILAND</b>	No.12 Soi Bangna-Trad 25, Bangna, Bangkok 10260 Thailand TEL : (66)2-022-9015 / FAX : (66)2-769-5450
<b>INDONESIA</b>	Jl. MH. Thamrin, Robson Square, Block A-15, Lippo Cikarang, Bekasi 17550, Jawa Barat, Indonesia TEL : (62)21-8990-5005 / FAX : (62)21-8990-5004
<b>GERMANY</b>	Leopoldstrasse 244, 1.Stock 80807 Munich Germany TEL : (49)89-208039-470 / FAX : (49)89-208039-478
<b>KOREA</b>	(902 No. 9 F. #C, Korea Bio Park.) 700, Daewangpangyo-ro, Bundang-gu, Seongnam-si, Gyeonggi-do 13488, Korea TEL : (82)31-702-3811 / FAX : (82)31-702-3881
<b>TAIWAN</b>	8F-2, No. 158, Sec. 2, Gongdao 5th Road, Hsinchu, Taiwan 30070 TEL : (886)3-572-9200 / FAX : (886)3-572-9300

US Integrator and representative



Izumi International, Inc.

1 Pelham Davis Circle

Greenville, SC 29615 USA

Tel: 864-288-8001 Fax: 864-288-7272

E-mail: [us-sales@izumiinternational.com](mailto:us-sales@izumiinternational.com)

Web: [www.izumiinternational.com](http://www.izumiinternational.com)