

NEW



PAT.

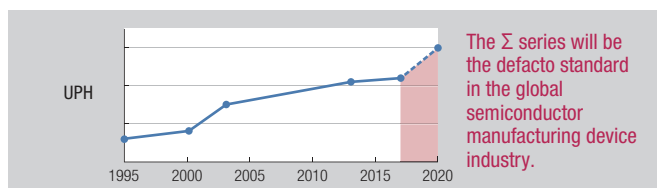


The ultimate air-pulse system

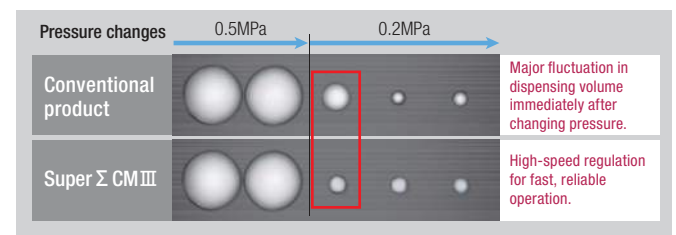
Ultra-reliable dispensing with faster cycle time and smaller size

Contributing to even higher throughput and yield.

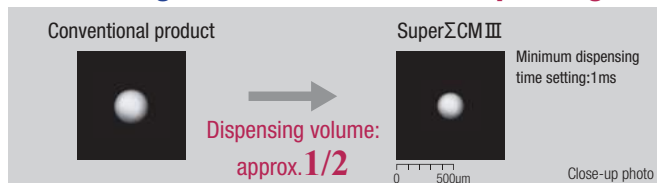
Delivering higher throughput for the global semiconductor manufacturing device industry.



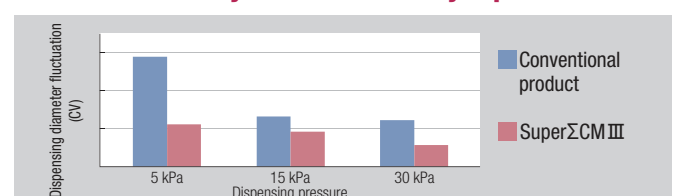
Better coverage of pressure changes.



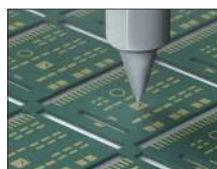
Delivering even smaller micro-dispensing.



Better reliability for low-viscosity liquid materials.



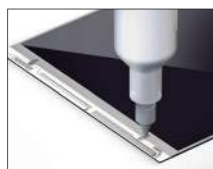
Applications



Ag paste dispensing for die bonding



Dust trapping agent dispensing on camera modules



Conductive Ag paste dispensing on touch panels

Greater performance with the Σ 3 major functions

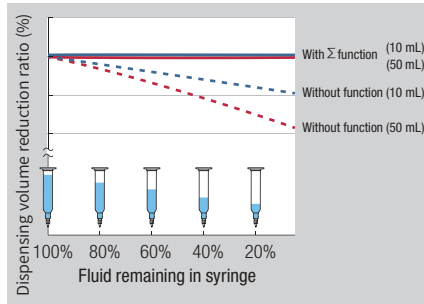
Automatic correction of volume reduction, automatic vacuum correction, automatic low fluid alarm

Better durability and easier maintenance

“Σ 3 major functions” help to increase yield and contribute to a smarter production line

Function 1 Automatic correction of volume reduction

Correction of reduction in dispensing amount caused by the effects of decreased syringe volume. Delivers reliable, high-precision dispensing throughout the entire syringe.

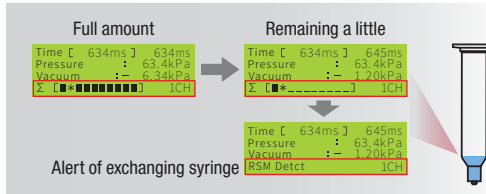


Function 2 Automatic vacuum correction

Constantly maintains the optimum vacuum level automatically for more reliable dispensing precision.

Function 3 Automatic low fluid alarm

Constantly detects and monitors the remaining fluid level in the syringe with a high level of precision.



Equipped with **SuperΣCMIII**
Fully automatic dispensing machine

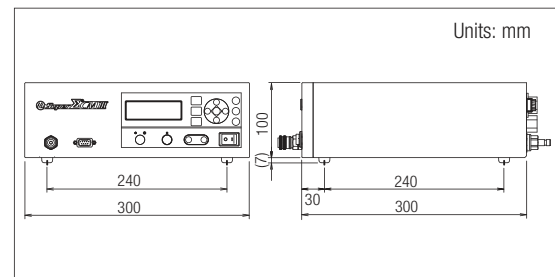


Specifications

Product name	Fully digital controlled dispenser	
Model	S-SIGMA-CM3-V5	S-SIGMA-CM3-V2
Dispensing system	Air-pulse system	
Control system	Micro-computer controlled electronic-pneumatic system	
Dispensing modes	TIMED/MANUAL mode	
Dispensing pressure setting range	0.030 to 0.500 MPa	0.005 to 0.200 MPa
Dispensing time setting range	0.001 to 9999.999 s	
Vacuum pressure setting range	-0.020 to 0 MPa	
Main functions	Automatic correction of volume reduction, automatic fluid-drip prevention, automatic remaining, volume alert, alpha (α) correction, delta (δ) correction, vacuum pressure correction, remaining volume display correction, dispensing shot counter, stopwatch, Japanese-English display switch, source pressure error, exhaust error, vacuum pressure error, solenoid valve error, solenoid valve alarm	
Channel number	100 CH	
RS-232C serial communication	Available	
Input signals	Dispense, channel switching, dispensing mode switching, channel preset, channel specification, channel step	
Output signals	Ready, dispensing completion, in-dispensing, in-dispensing cycle, solenoid valve alarm, error, remaining volume alert, power on	
Rated power supply and frequency	AC100-240 V 50/60 Hz	
Power consumption	30 W	
Conformity standards	CE-marking (Low Voltage Directive, EMC Directive) EU RoHS	
Dimensions W×D×H	W300×D300×H100 mm	
Weight	5.8 kg	

Note: contact Musashi Engineering if syringes or cartridges exceeding 70 mL need to be used.

External Dimensions



SuperΣXIII Light specification version



Safety precautions

Please read the instruction manual carefully before use to ensure correct and safe usage.

*These specifications are subject to change without any notice.

*The copyright of this catalog belongs to our company. Reproduction and distribution of the pictures, illustrations and any other information in this catalog to any other media without prior written permission are strictly prohibited; doing so will result in copyright infringement.

MUSASHI ENGINEERING, INC. (headquarters) is certified and registered according to the ISO 9001 Quality Management System and the ISO 14001 Environmental Management System.



<http://www.musashi-engineering.co.jp/english/>

World Leading Dispenser
MUSASHI ENGINEERING, INC.

HEAD OFFICE
8-7-4, Shimorenjaku, Mitaka-shi, Tokyo, 181-0013, Japan TEL: (81) 422-76-7111 / FAX: (81) 422-76-7122
BRANCH
TOKYO, OSAKA, NAGOYA, SENDAI, FUKUOKA, SAITAMA, NAGANO, EAST-KANTO, AKITA, KANAZAWA

SINGAPORE	10 Ubi Crescent #05-24 Ubi Techpark Lobby B Singapore 408564 TEL: (65) 6258-2422 / FAX: (65) 6258-4844
THAILAND	No.12 Soi Bangna-Trad 25, Bangnanuea, Bangna, Bangkok 10260 Thailand TEL: (66) 2-022-9015 / FAX: (66) 2-769-5450
INDONESIA	Jl. MH. Thamrin, Robson Square, Block A-15, Lippo Cikarang, Bekasi 17550, Jawa Barat, Indonesia TEL: (62) 21-8990-5005 / FAX: (62) 21-8990-5004
GERMANY	Marcel-Breuer-Str. 15, D-80807 Munich, Germany TEL: (49) 89-321996-06 / FAX: (49) 89-321996-07
KOREA	(902 No. 9 F. #C, Korea Bio Park.) 700, Daewangpangyo-ro, Bundang-gu, Seongnam-si, Gyeonggi-do 13488, Korea TEL: (82) 31-702-3811 / FAX: (82) 31-702-3881
TAIWAN	8F-2, No. 158, Sec. 2, Gongdao 5th Road, Hsinchu, Taiwan 30070 TEL: (886) 3-572-9200 / FAX: (886) 3-572-9300

US Integrator and representative



Izumi International, Inc.
1 Pelham Davis Circle
Greenville, SC 29615 USA
Tel: 864-288-8001 Fax: 864-288-7272
E-mail: us-sales@izumiinternational.com
Web: www.izumiinternational.com

